



Wellesley Road, London, W4 3AL

Guide Price £1,000,000

**WHITMAN & CO.**

SALES · LETTINGS · COMMERCIAL

- Wider than average terraced house
- Sought after location
- No chain
- 40' South facing garden
- Three double bedrooms
- Full of potential

Tenure - Freehold  
Local Authority - Hounslow  
Council Tax - Band G

## Wellesley Road, W4

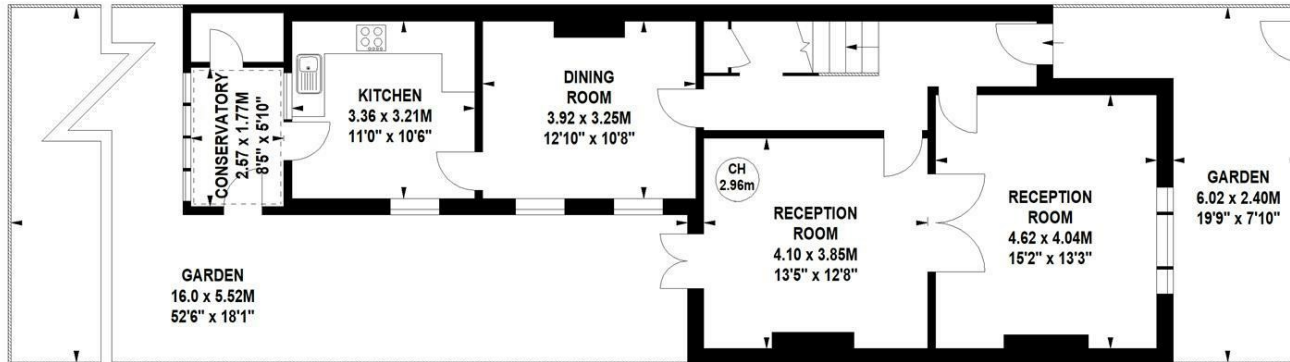
Approximate gross internal area

138.79 sq m / 1494 sq ft

Key :  
CH - Ceiling Height



First Floor



Ground Floor

Not to scale, for guidance only and must not be relied upon as a statement of fact.  
All measurements and areas are approximate only

## THE PROPERTY

A wider-than-average three-bedroom period house offering an excellent balance of living and entertaining space, combined with a 40' south-facing secluded garden. The property comprises three double bedrooms, a white bathroom suite, 28' interconnecting reception rooms, a fully fitted kitchen, breakfast room, lean-to/WC, and a private 40' south-facing landscaped garden. Ideally situated within close proximity to Gunnersbury (tube/Mainline) station, numerous bus routes, and the extensive range of shops, bars, and restaurants on Chiswick High Road. No chain.

## SITUATION



5-7 Turnham Green Terrace, Chiswick, London, W4 1RG

Tel 020 8747 8800

E-mail [sales@whitmanandco.com](mailto:sales@whitmanandco.com)

Website [www.whitmanandco.com](http://www.whitmanandco.com)



MISREPRESENTATION ACT 1967

Whitman & Co. for themselves and for the vendors give notice that these particulars do not constitute any part of, an offer of contract. All statements contained in these particulars are made without responsibility on the part of Whitman & Co. or the vendor. None of the statements contained in these particulars is to be relied upon as statements or representations of facts. Any intending purchaser must satisfy himself by inspection or otherwise as to the correctness of each of the statements contained in these particulars. The vendor does not make or give, and neither Whitman & Co. or any person in their employment has any authority to make or give, any representation or warranty whatever in relation to the property.